

High-level Configuration with Comfort and Reliability



YX657 Wheel Loader

Comfort

- ☑ New-type steel structure cab provides all-around clear visibility, high security and lower noise
- ☑ Long boom and bigger bucket have been used.

Reliability

- ☑ Dry type axle with excellent load capacity
- ☑ Full load sensing hydraulic steering system has been adopted for flexible steering
- ☑ Dual sealing is used for pipelines, providing high reliability
- ☑ Bottom & backside of bucket is reinforced for rock working conditions, while the main cutting edge is made of special wear-resisting material, increasing the abrasion resistance by 30%

High-level Configuration

- ☑ Cummins diesel engine is adopted for strong power and high reliability
- ☑ ZF transmission is equipped, featuring easy operation, flexibility and efficiency.
- ☑ Pilot controlled working devices system is adopted for easy operation and high efficiency

YX657 Wheel Loader

High-level Configuration
with Comfort and Reliability

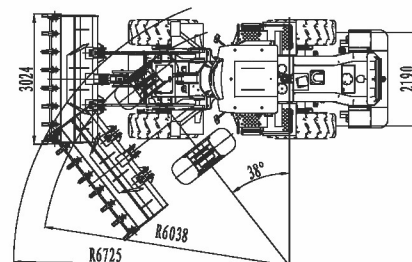
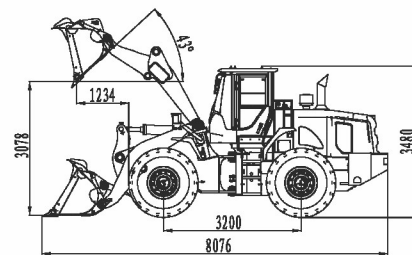
Strong Power & Green Initiative



- ◆Cummins supercharged engine is adopted, featuring low fuel consumption, low noise, high reliability and strong power.
- ◆ZF fixed shaft electro-hydraulic shifting transmission has the KD gear shifting function, featuring easy operation, flexibility and efficiency.

Security & Reliability

- ◆New-type steel structure cab provides all-around clear visibility. Built-in structural framework contributes to high security. Full decorated interior cab increases the noise reduction effect.
- ◆Waterproof design for key circuits and power switch design upgrade the overall service life and security. Digital instrument panel provides excellent human-machine interaction.



Technical Parameters

Bucket capacity	m ³	2.4~4.5(standard bucket 3.0)	Total cycle time(lift, dump & lower)	s	≤ 11
Rated load	kg	5000	Dump height/Dump angle	mm/°	3078/43
Overall operating weight	kg	16560	Dump distance/Dump angle	mm/°	1234/43
Max. traction force	kN	≥160	Min. ground clearance	mm	445
Max. breakout force	kN	≥191	Wheel base	mm	3200
Gradeability	°	30	Wheel tread	mm	2190
Min. turning radius(outer side of the bucket)	mm	6725	Departure angle	°	30
Min. turning radius(outer side of the tire)	mm	6038	Steering angle(left & right)	°	38
Overall dimension(standard configuration)			mm 8076*3024*3480		

Engine

Model - - - Cummins 6CTA8.3-C215
Shanghai SC11CB220G2B1
Type - - vertical, in-line, direct injection, water-cooling, four-stroke, supercharged
Rated power - - - 160kW(Cummins)
162kW(Shanghai)

Braking System

Service brake - - - - - air-over-oil caliper disc
Parking brake (emergency brake) - - - manual pneumatic control drum brake

Tire

Specification - - - - - 23.5-25
Tread pattern - - - - - general pattern

Drive System

Transmission model - - - - - ZF4WG200
Torque converter type - - - single stage, three elements (single turbine)
Transmission type - - - - - fixed shaft
Gears - - - - - 4 forward, 3 reverse
Main drive type - - - - - spiral bevel gear, first reduction
Hub reduction type - - - - - planetary, first reduction
Drive axle - - - - - Dry type axle

Working Device Hydraulic System

Hydraulic system pressure - - - 17.5Mpa
Control type - - - - - pilot control
Oil pump type - - - - - gear pump

Steering System

Type - - - - - load sensing hydraulic
Oil pump type - - - - - gear pump
Oil pump displacement - - - - - 80ccr
Working pressure - - - - - 16Mpa

Oil Capacity

Fuel tank - - - - - 300L
Engine oil - - - - - 20L
Transmission oil - - - - - 59L
Hydraulic oil - - - - - 176L
Gear oil (per axle) - - - - - 27L
Antifreeze liquid - - - - - 45L

ENSIGN HEAVY INDUSTRIES CO., LTD.

Sales Hotline: +86-536-6298882 Fax: +86-536-6298797
Email: export@ensighni.com Website: www.ensighni.com
Add: No.1567, Ensign Street, Economic Development Zone, Changle, Weifang, Shandong, China Post Code: 262499